



# GLOBEFAN TECHNOLOGY CO., LTD.

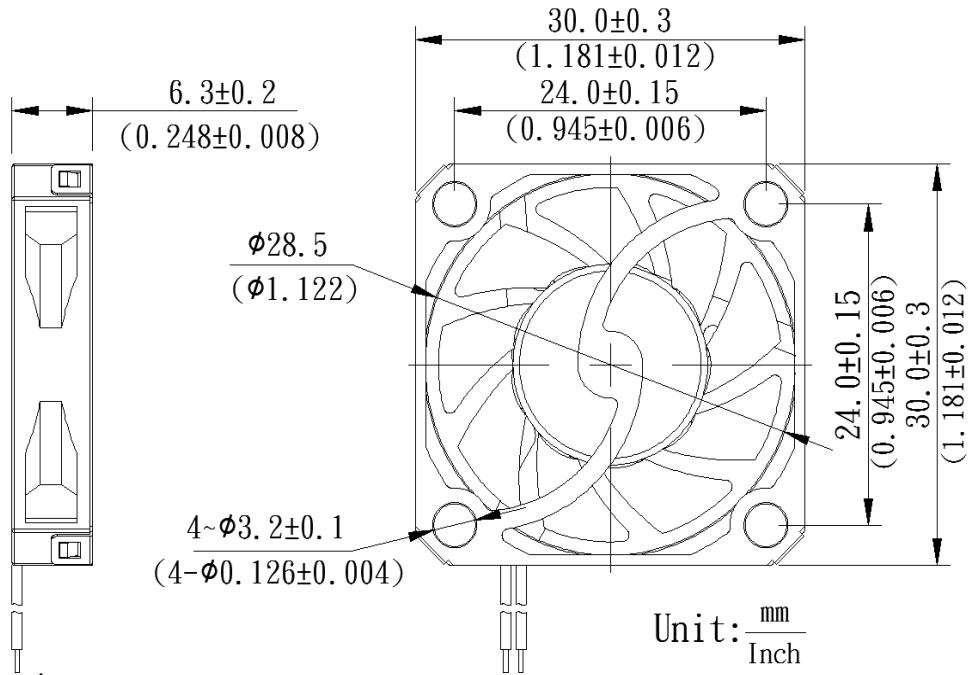
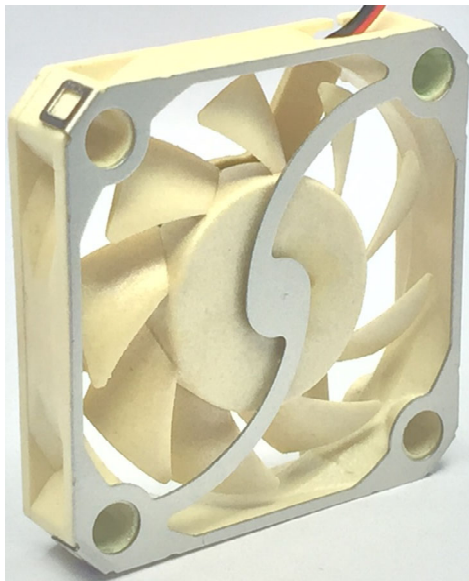
No. 28, 3 Lane Zhongxinjin Road, Jin Industry District Shoei Koou Village,

Da Laang Town, Dungguan City, Guangdong Province, China

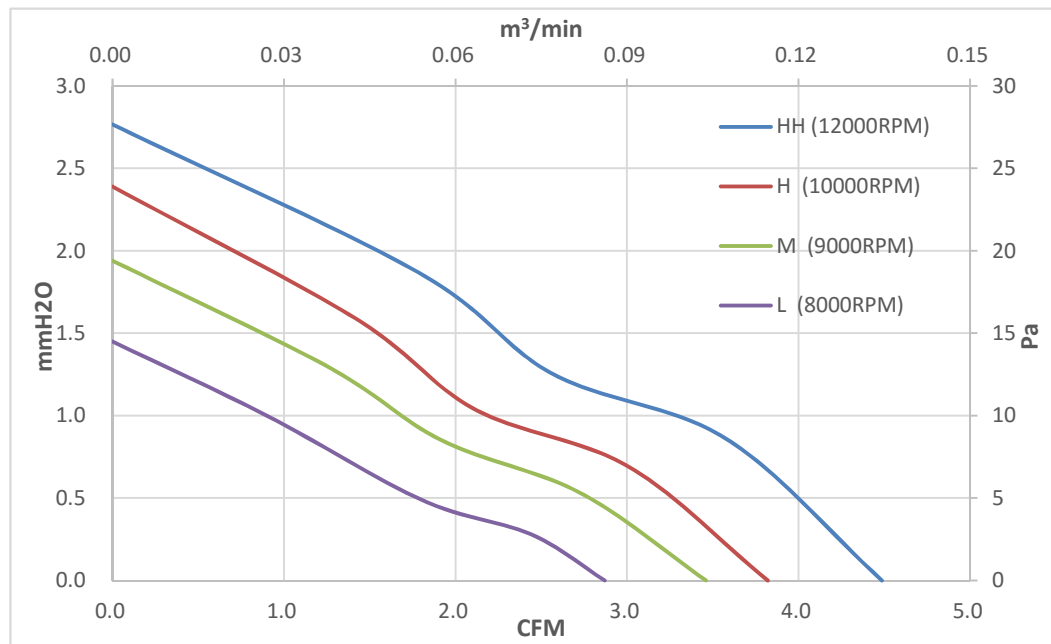
Tel : +86 769 83182898~9

Fax : +86 769 83182897

## ◆ DIMENSIONS DRAWING



## ◆ 30x30x6mm DC Axial Fan P/Q Curves (At rated speed)



### \* BEARING TYPE

- Sleeve bearing

### \* Electrical Function

- PWM (Pulse Width Modulation)
- Frequency Generator Output Signal
- RD (Lock Detection) Output Signal

### \* Material

Impeller: Plastic (LCP E130i)

Frame : Plastic (LCP E130i)

### \* Lead wires

UL3302 32AWG or Equivalent

Red or Yellow Wire Positive (+)

Black Wire Negative (-)

Green Wire Signal (FG)

Blue Wire PWM Control Signal

### \* Weight : 3.6g (0.13 oz)

MODEL	Operating Voltage Range	Rated Voltage	Rated Current	Rated Input Power	Speed	Maximum Air Flow		Maximum Air Pressure		Noise
Part No.	VDC	VDC	Amp	Watts	R.P.M	m <sup>3</sup> /min	CFM	mmH <sub>2</sub> O	Pa	dB(A)
TA0LS030612HH	4 ~ 13.8	12	0.24	2.9	12000±10%	0.13	4.49	2.77	27.14	35.8
TA0LS030612H	4~ 13.8	12	0.20	2.4	10000±10%	0.11	3.82	2.39	23.44	29.0
TA0LS030612M	5 ~ 13.8	12	0.16	1.9	9000±10%	0.10	3.46	1.94	19.02	26.8
TA0LS030612L	6 ~ 13.8	12	0.12	1.4	8000±10%	0.09	3.08	1.54	15.10	24.6

\* Function type is optional.

\* The max. air flow and speed are measured in free air; max. air pressure is measured at close to zero air flow.

\* Noise is measured in anechoic chamber in free air, one meter from intake side.

\* All readings are typical values at rated voltage.

\* Specifications are subject to change without notice.